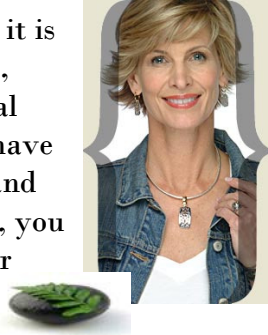


What's Your Fashion Personality

We all have a fashion personality – some of us have more than one! Read on to find out which one you are and find pieces that will work for you!

Natural

If you are a natural woman, it is likely that you like a no fuss, easy style. You wear minimal makeup, dress for comfort, have a quick and easy hairstyle, and when it comes to accessories, you head straight for the small or simple!



Pieces that will work for you:

Whimsy Ensemble Starburst Ensemble Caleb Ring
 Sassy Ensemble More Imagination Sorbet Two Ring
 Two Hearts necklace Cuff 'em bracelet Class Act Ring
 Bailey Ensemble Lookin Good bracelet Heartfelt Ring
 Freestyle Necklace Ariel bracelet Threes Company Ring

Pieces that will work for you:

Exquisite Ring Unbelievable Ensemble Laura Ring
 Purple Passion Ensemble Violet Lace Necklace
 Grace Necklace All Dressed Up bracelet Bella Ring
 Black Beauty Ensemble High Society Ensemble
 Ebony Necklace Simple Truth Necklace Tessa Necklace
 Center Stage Ensemble All 4 One Ring Victoria bracelet
 Opposites Attract Ensemble



Romantic

If you are a romantic, you may love ribbon and lace, hearts and bow!

Your makeup tends to be natural and pretty-

you love vintage pieces and "antiqued" style jewelry.

If you are a classic dresser, you may have clothes in your closet that you have worn for years and have yet to go out of style! You keep things tailored and steer clear of trendy cuts and prints, opting for warm classic colors such as navy, black, red and chocolate. Your jewelry is also timeless and you may have lots of pearls, chains, and simple pieces that accommodate your classic style



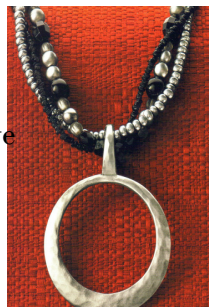
Pieces that will work for you:

Hoop De Do Ensemble First Lady Ensemble Jewel Ring
 Laura Ensemble Bella Ensemble Silverado Necklace
 Citrine Pendant Belissimo Ensemble Audrey Ensemble
 Patina Ensemble Cellini Ring Make A Statement Ensemble
 Highlights Ensemble Sophia Ensemble Love Knot Ring
 Flirty Bracelet Elite Ring Gilford Necklace
 Futura Ensemble
 Signature bracelet

CLASSIC

If you are bold, your motto is the bigger, the better! You love bright colors like oranges, greens, reds. You love bold prints like geometrics and animal prints. You love big jewelry! Your makeup may be more dramatic and you carry larger, brighter handbags.

BOLD



Pieces that will work for you:

Wrap It Up Ring Paisley Bracelet
 Concord Ring Milan Ring
 Sunset Ensemble Portrait Necklace
 Hidden Treasures Ensemble
 Carmel Latte Ensemble Debut Ensemble
 Bohemian Ensemble Excitement Ring
 International Ensemble Shadows Necklace