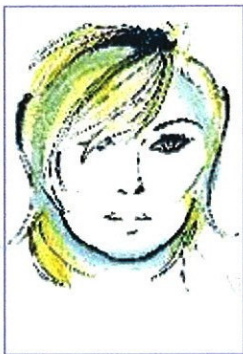




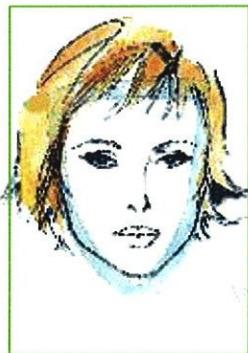
## OVAL

An oval face is considered the perfect shape and is used as the standard. The oval face has a curved forehead slightly wider than the chin, giving the face an egg shape. The cheekbone width is about  $\frac{2}{3}$  the length.



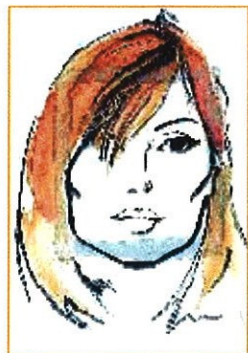
## ROUND

The round face is nearly circular with a rounded forehead, full curved cheeks, and a rounded jaw line and chin. The proportion for the round face is that it is about as wide as it is long.



## HEART

The heart shaped or inverted triangle face has a wide forehead and broad cheeks with a short, narrow, sometimes pointed chin.



## SQUARE

The square is almost as wide at the forehead and cheeks as it is at the jaw line. The face is similar to the round in that it is as wide as it is long, but the forehead and jaw line are squared or angular.